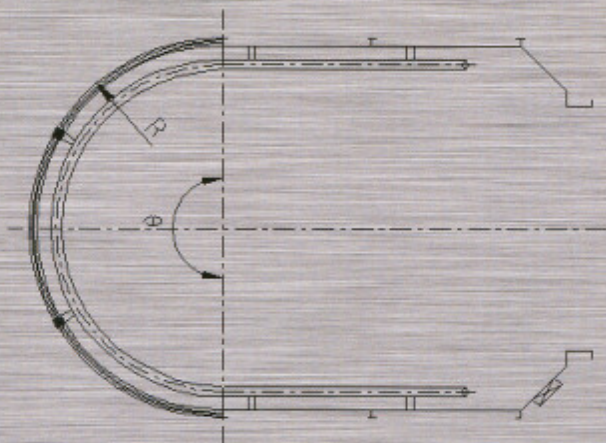




G001

- **上下外罩:** 4410C型, 发纹不锈钢围坎, 乳白色1/4球形外罩, 围坎材料可选。
- **吊顶:** 4330型, 发纹不锈钢框架, 有机镜片顶板, 安全窗可选。
- **轿壁:** 发纹不锈钢, 材料可选。
- **观光壁:** 分体透明弧形玻璃, 装饰立柱, 立柱与围坎材料统一。
- **扶手:** 4900型, 圆形镜面不锈钢扶手 (三侧)。
- **地面:** 4901型, PVC地面装饰 (MA-0201), 大理石地面可选。
- **适用梯型:** XO-G、GeN2-G、OH-G、HY21G(A)。
- **其它:** 外挂灯带可选。



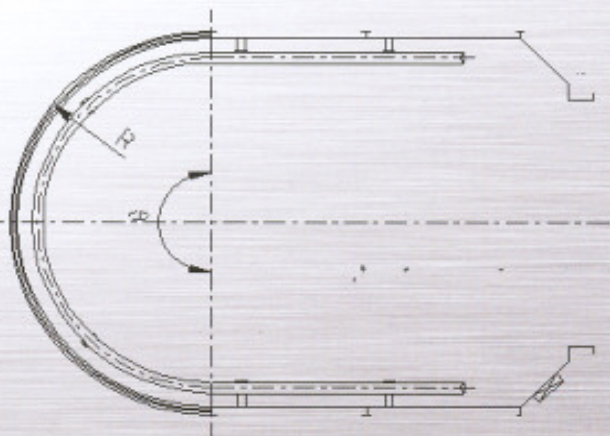
G001剖面图

- **Up and down encloser:** 4410C type, hair line stainless steel round-bank, ivory-white 1/4 spherical encloser, the material of round-bank is optional.
- **Ceiling:** 4330 type, hair line stainless steel frame, organic lens ceiling panel, the security window is optional.
- **Wall of carriage compartment:** hair line stainless steel, the material is optional.
- **Sightseeing wall:** split transparent arc glass, decorative vertical shaft, the material of vertical shaft and round-bank is same.
- **Arm rest:** 4900 type, round stainless mirror face steel arm rest (three sides).
- **Ground:** 4901 type, PVC ground decoration (MA-0201), marble ground is optional.
- **Applicable elevator models:** XO-G, GeN2-G, OH-G, HY21G(A).
- **Others:** External hanged lamp belt is optional.



- **上下外罩:** 4410D型, B4007 (星空蓝) 烤漆钢板嵌透光灯带围坎, 灯白色1/4球形外罩, 烤漆颜色可选。
- **吊顶:** 4331型, B4005 (浅水灰) 烤漆钢板顶板, 半透明条形灯饰, 圆弧形灯罩; 安全窗不可选。
- **轿壁:** 发纹不锈钢, 材料可选。
- **观光壁:** 分体透明弧形玻璃, 无装饰立柱, 整体玻璃可选。
- **扶手:** 4900B型, 双管镜面不锈钢扶手 (三侧)。
- **地面:** 4901型, PVC地面装饰 (MA-0201), 大理石地面可选。
- **适用梯型:** XO-G、GeN2-G、OH-G、HY21G(A)。
- **其它:** 选择装饰立柱时, 外挂灯带可选。

G002

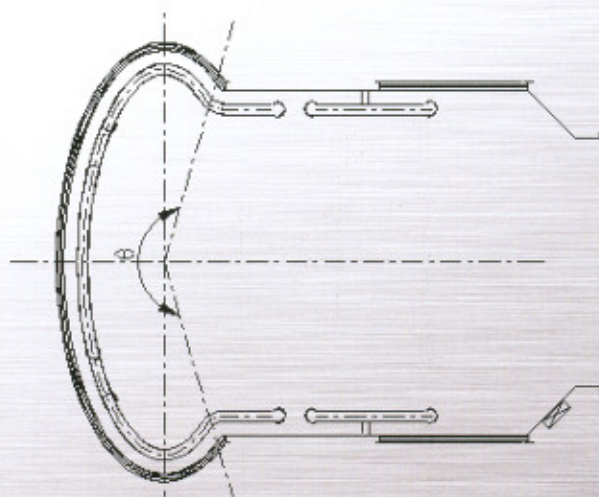


G002剖面图

- **Up and down encloser:** 4410D type, B4007 (Star blue) baking finish steel plate embedded with transparent lamp belt round-bank, ivory-white 1/4 spherical encloser, the color of baking finish is optional.
- **Ceiling:** 4331 type, B4005 (Light grey) baking finish steel plate ceiling panel, translucent strip lamp decoration, arc lamp shade, the security window is not optional.
- **Wall of carriage compartment:** hair line stainless steel, the material is optional.
- **Sightseeing wall:** split transparent arc glass, no decorative vertical shaft, the integrated glass is optional.
- **Arm rest:** 4900B type, double-tube stainless mirror face steel arm rest (three sides).
- **Ground:** 4901 type, PVC ground decoration (MA-0201), marble ground is optional.
- **Applicable elevator models:** XO-G, GeN2-G, OH-G, HY21G(A).
- **Others:** the external hanged lamp belt is optional when choosing decorative vertical shaft.



- **上下外罩:** 4410E型, W1005 (米兰黄) 烤漆钢板内嵌立体透光灯带围坎, 灯白色椭圆型外罩, 烤漆颜色可选。
- **吊顶:** 4320型, B4005 (浅水灰) 烤漆钢板顶板, 半透明弧形灯罩, 混合光源照明; 烤漆颜色可选。
- **轿壁:** 前壁可选不锈钢或钢板, COP前置; 镜面不锈钢框架, 透明玻璃, COP侧置; 框架材料可选。
- **观光壁:** 分体透明弧形玻璃, 无装饰立柱。
- **扶手:** 4900E型, π 型镜面不锈钢扶手 (三侧)。
- **地面:** 4901型, PVC地面装饰 (MA-0201), 大理石地面可选。
- **适用梯型:** XO-G、OH-G、HY21G(A)。
- **其它:** 选择装饰立柱时, 外挂灯带可选。



G003剖面图

G003

- **Up and down encloser:** 4410E type, W1005 (Milan yellow) baking finish steel plate embedded with transparent lamp belt round-bank, ivory-white elliptical encloser, the color of baking finish is optional.
- **Ceiling:** 4320 type, B4005 (Light grey) baking finish steel plate ceiling panel, translucent arc lamp shade, mixed light source illumination.
- **Wall of carriage compartment:** the front wall is made of stainless steel or steel plate, COP front disposed, mirror face stainless steel frame, transparent glass, COP side disposed, the frame material is optional.
- **Sightseeing wall:** split transparent arc glass, no decorative vertical shaft.
- **Arm rest:** 4900E type, π type stainless mirror face steel arm rest (three sides).
- **Ground:** 4901 type, PVC ground decoration (MA-0201), marble ground is optional.
- **Applicable elevator models:** XO-G, OH-G, HY21G(A).
- **hydraulic elevatorOthers:** the external hanged lamp belt is optional when choosing decorative vertical shaft.

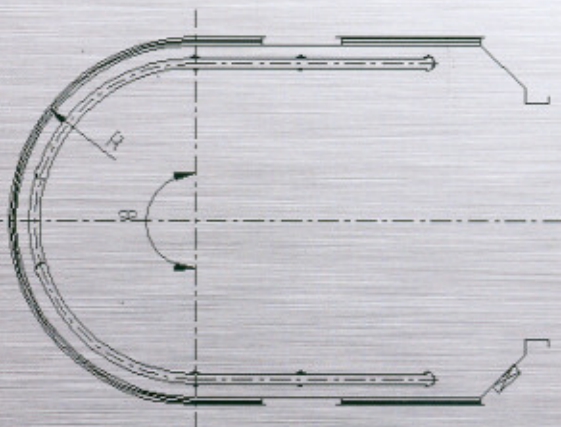




- **上下外罩:** 4410G型, R3005 (映山红) 烤漆钢板围坎, 立体光带; 半球型全透明上罩, 乳白色1/4球型下罩, 烤漆颜色可选。
- **吊顶:** 4334型, B4002 (浅宝兰) 烤漆钢板顶板配灯饰, 可选满天星变色光带。
- **轿壁:** 前壁可选不锈钢或钢板, COP前置; 镜面不锈钢框架, 透明玻璃, COP侧置; 框架材料可选。
- **观光壁:** 分体透明弧形玻璃, 无装饰立柱; 整体玻璃可选。
- **扶手:** 4900E型, π 型镜面不锈钢扶手 (三侧)。
- **地面:** 4901型, PVC地面装饰 (MA-0201), 大理石地面可选。
- **适用梯型:** XO-G、OH-G、HY21G(A)。
- **其它:** 选择装饰立柱时, 外挂灯带可选。

G004

- **Up and down encloser:** 4410G type, R3005 (rhododendron red) baking finish steel plate round-bank, three-dimensional light belt; hemispherical transparent up encloser, ivory-white hemispherical down encloser, the color of baking finish is optional.
- **Ceiling:** 4334 type, B4002 (light sapphire blue) baking finish steel plate ceiling with lamp decoration, full star color-changeable light belt is selective.
- **Wall of carriage compartment:** the front wall is made of stainless steel or steel plate, COP front disposed, mirror face stainless steel frame, transparent glass, COP side disposed, the frame material is optional.
- **Sightseeing wall:** split transparent arc glass, no decorative vertical shaft, the integrated glass is optional.
- **Arm rest:** 4900E type, π type stainless mirror face steel arm rest (three sides).
- **Ground:** 4901 type, PVC ground decoration (MA-0201), marble ground is optional.
- **Applicable elevator models:** XO-G, OH-G, HY21G(A).
- **Others:** the external hanged lamp belt is optional when choosing decorative vertical shaft.



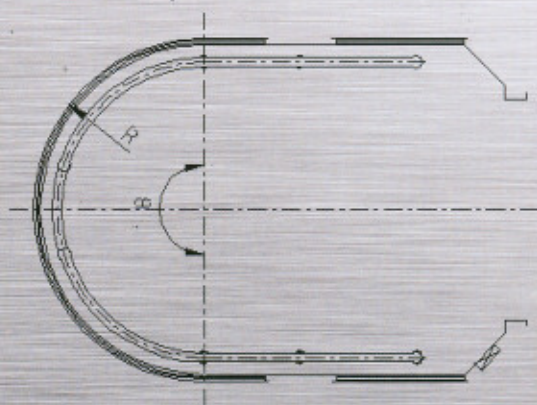
G004剖面图



- **上下外罩:** 4410F型, 1/2 球型全透明上罩, R3004 (火山红) 圆柱状烤漆钢板双道内透光带下罩, 烤漆颜色可选。
- **吊顶:** 4332型, B4005 (浅水灰) 烤漆钢板顶板配灯饰, 可选满天星变色光带。
- **轿壁:** 前壁可选不锈钢或钢板, COP前置; 镜面不锈钢框架, 透明玻璃, COP侧置; 框架材料可选。
- **观光壁:** 分体透明弧形玻璃, 无装饰立柱; 整体玻璃可选。
- **扶手:** 4900E型, π 型镜面不锈钢扶手 (三侧)。
- **地面:** 4901型, PVC地面装饰 (MA-0201), 大理石地面可选。
- **适用梯型:** XO-G、OH-G、HY21G(A)。
- **其它:** 选择装饰立柱时, 外挂灯带可选。

G005

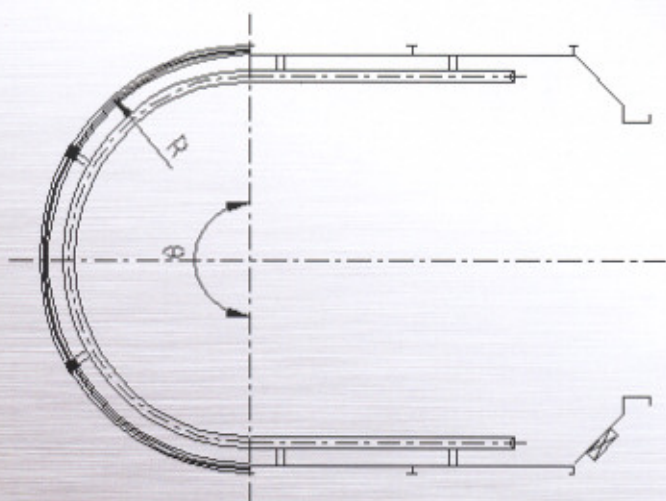
- **Up and down encloser:** 4410F type, hemispherical transparent up encloser, R3004 (volcano red) cylindrical baking finish steel plate and light transmittance in the double-tube down encloser, the color of baking finish is optional.
- **Ceiling:** 4332 type, B4005 (light water grey) baking finish steel plate ceiling with lamp-decoration, full star color-changeable light belt is selective.
- **Wall of carriage compartment:** the front wall is made of stainless steel or steel plate, COP front disposed, mirror face stainless steel frame, transparent glass, COP side disposed, the frame material is optional.
- **Sightseeing wall:** split transparent arc glass, no decorative vertical shaft, the integrated glass is optional.
- **Arm rest:** 4900E type, π type stainless mirror face steel arm rest (three sides)
- **Ground:** 4901 type, PVC ground decoration (MA-0201), marble ground is optional.
- **Applicable elevator models:** XO-G, OH-G, HY21G(A).
- **Others:** the external hanged lamp belt is optional when choosing decorative vertical shaft.



G005剖面图



- **上下外罩:** 4410H型, W1005 (米兰黄) 圆柱状烤漆钢板双道内透光带外罩; 烤漆颜色可选。
- **吊顶:** 4335型, B4005 (浅水灰) 烤漆钢板顶板, 放射状选择机玻璃灯条辅以筒灯混合照明。
- **轿壁:** 发纹不锈钢, 轿壁材料可选。
- **观光壁:** 分体透明弧形玻璃, 装饰立柱, 立柱与围坎材料统一。
- **扶手:** 4900B型, 双管镜面不锈钢扶手 (三侧)。
- **地面:** 4901型, PVC地面装饰 (MA-0201), 大理石地面可选。
- **适用梯型:** XO-G、GeN2-G、OH-G、HY21G(A)。
- **其它:** 外挂灯带可选。



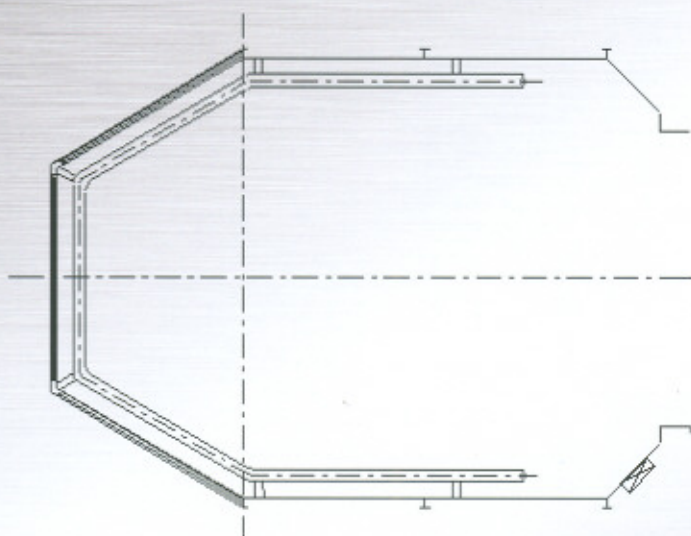
G006剖面图

- **Up and down encloser:** 4410H type hemispherical transparent up encloser, W1005 (Milan yellow) columned baking finish steel plate and light transmittance in the double-tube with encloser, the color of baking finish is optional.
- **Ceiling:** 4335 type, B4005 (light water grey) baking finish steel plate ceiling, radial selecting glass light belt illuminated with barrel light.
- **Wall of carriage compartment:** hair line stainless steel, the material of carriage compartment's wall is optional.
- **Sightseeing wall:** split transparent arc glass, decorative vertical shaft, the material of vertical shaft and round-bank is same.
- **Arm rest:** 4900B type, double-tube type mirror face steel arm rest (three sides).
- **Ground:** 4901 type, PVC ground decoration (MA-0201), marble ground is optional.
- **Applicable elevator models:** XO-G, GeN2-G, OH-G, HY21G(A).
- **Others:** External hanged lamp belt is optional.



G006

- **上下外罩:** 4420A型, 半梭状R3005 (映山红) 烤漆钢板外罩, 烤漆颜色可选。
- **吊顶:** 4340型, 镜面不锈钢框架, 有机镜片顶板, 混合光源照明; 框架材料可选, 安全窗可选。
- **轿壁:** 发纹不锈钢, 材料可选。
- **观光壁:** 分体透明弧形玻璃, 装饰立柱。
- **扶手:** 4900型, 圆形镜面不锈钢扶手 (三侧)。
- **地面:** 4901型, PVC地面装饰 (MA-0201), 大理石地面可选。
- **适用梯型:** XO-G、OH-G、HY21G(A)。
- **其它:** 外挂灯带可选。



G007剖面图



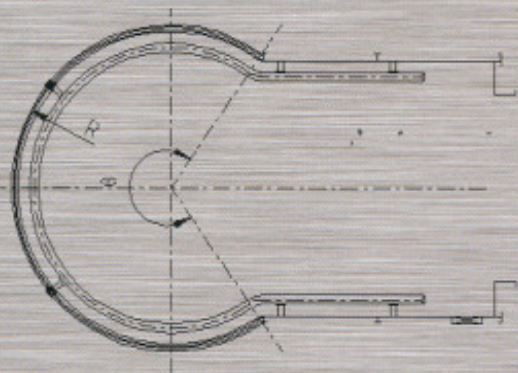
G007



- **Up and down encloser:** 4420A type, semi-spindle R3005 (rhododendron red) baking finish steel plate encloser, the color of baking finish is optional.
- **Ceiling:** 4340 type, mirror face stainless steel frame, organic lens ceiling panel, mixed light source illumination, the frame material is optional, the security window is optional.
- **Wall of carriage compartment:** hair line stainless steel, the material of carriage compartment's wall is optional.
- **Sightseeing wall:** split transparent arc glass, fixed decorative vertical shaft.
- **Arm rest:** 4900 type, round stainless mirror face steel arm rest (three sides).
- **Ground:** 4901 type, PVC ground decoration (MA-0201), marble ground is optional.
- **Applicable elevator models:** XO-G、OH-G、HY21G(A).
- **Others:** External hanged-lamp belt is optional.



- **上下外罩:** 4410I型, W1010 (淡咖啡) 圆柱型烤漆钢板嵌三道透光灯带外罩; 烤漆颜色可选。
- **吊顶:** 4310型, B4005 (浅水灰) 灯白色灯罩; 混合光源照明, 烤漆颜色可选。
- **轿壁:** 发纹不锈钢, 轿壁材料可选。
- **观光壁:** 分体透明弧形玻璃, 固定装饰立柱。
- **扶手:** 4900B型, 双管镜面不锈钢扶手 (三侧)。
- **地面:** 4901型, PVC地面装饰 (MA-0201), 大理石地面可选。
- **适用梯型:** XO-G、OH-G、HY21G(A)。
- **其它:** 外挂灯带可选。



G011剖面图

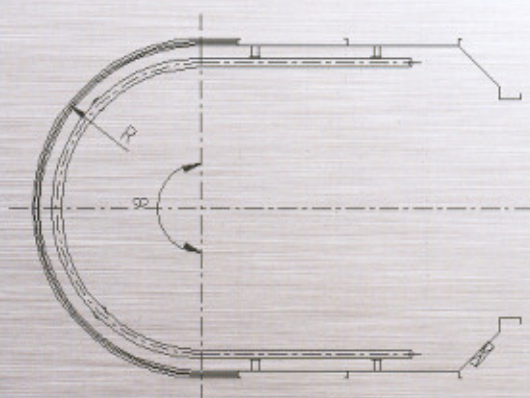
G008



- **Up and down enclosure:** 4410I type, W1010 (light coffee) columned baking finish steel plate embedded with three light-directing lamp belt enclosure. the color of baking finish is optional.
- **Ceiling:** 4310 type, B4005 (light water grey) lamp-white lamp shade; mixture light source illumination, the color of baking finish is optional.
- **Wall of carriage compartment:** hair line stainless steel, the material of carriage compartment's wall is optional.
- **Sightseeing wall:** split transparent arc glass, fixed decorative vertical shaft.
- **Arm rest:** 4900B type, double-tube mirror face stainless steel arm rest (three sides).
- **Ground:** 4901 type, PVC ground decoration (MA-0201), marble ground is optional.
- **Applicable elevator models:** XO-G、OH-G、HY21G(A).
- **Others:** External hanged lamp belt is optional.



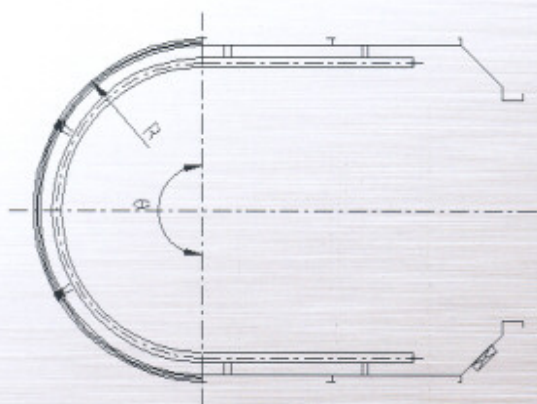
G009



G009剖面图

- **上下外罩:** 4410J型, 双层B4009 (碧空蓝) 烤漆钢板外罩, 烤漆颜色可选。
- **吊顶:** 4333型, 镜面不锈钢顶板; 圆柱形立体灯饰
- **轿壁:** 发纹不锈钢, 材料可选。
- **观光壁:** 分体透明圆弧接直线玻璃, 无装饰立柱, 整体玻璃可选。
- **扶手:** 4900B型, 双管镜面不锈钢扶手 (三侧)。
- **地面:** 4901型, PVC地面装饰 (MA-0201), 大理石地面可选。
- **适用梯型:** XO-G、GeN2-G、OH-G、HY21G(A)。
- **其它:** 选择装饰立柱时, 外挂灯带可选。

- **Up and down encloser:** 4410J type, double-layer B4009 (sky blue) baking finish steel plate encloser, and the color of baking finish is optional.
- **Ceiling:** 4333 type, mirror face stainless steel ceiling, columned three-dimensional lamp decoration.
- **Wall of carriage compartment:** hair line stainless steel, the material is optional.
- **Sightseeing wall:** split transparent circular glass connected with straight-line glass, no decorative vertical shaft, the integrated glass is optional.
- **Arm rest:** 4900B type, double-tube mirror face stainless steel arm rest (three sides).
- **Ground:** 4901 type, PVC ground decoration (MA-0201), marble ground is optional.
- **Applicable elevator models:** XO-G、GeN2-G、OH-G、HY21G(A).
- **Others:** the external hanged lamp belt is optional when choosing decorative vertical shaft.



G011剖面图

G011

- **上下外罩:** 4410K型, 圆柱斜切钛金钣嵌透光灯带外罩, 材料可选。
- **吊顶:** 4336型, 圆形镜面不锈钢框架, 有机镜片顶板; 混合光源照明; 框架材料可选、安全窗可选。
- **轿壁:** 发纹不锈钢, 材料可选。
- **观光壁:** 分体透明弧形玻璃, 装饰立柱。
- **扶手:** 4900型, 圆形镜面不锈钢扶手 (三侧)。
- **地面:** 4901型, PVC地面装饰 (MA-0201), 大理石地面可选。
- **适用梯型:** XO-G、GeN2-G、OH-G、HY21G(A)。
- **其它:** 外挂灯带可选。

- **Up and down encloser:** 4410K type, column angular-cut titanium metal plate embedded with light-directing lamp belt encloser, the material is optional.
- **Ceiling:** 4336 type, mirror face stainless steel frame, organic lens ceiling panel, mixed light source illumination, the frame material is optional, the security window is optional.
- **Wall of carriage compartment:** hair line stainless steel, the material is optional.
- **Sightseeing wall:** split transparent arc glass, decorative vertical shaft.
- **Arm rest:** 4900 type, round mirror face stainless steel arm rest (three sides).
- **Ground:** 4901 type, PVC ground decoration (MA-0201), marble ground is optional.
- **Applicable elevator models:** XO-G、GeN2-G、OH-G、HY21G(A)。
- **Others:** External hanged lamp belt is optional.



G012

- **上下外罩:** 4420D型, 菱形R3005 (映山红) 烤漆钢板外罩, 烤漆颜色可选。
- **吊顶:** 4371型, 镜面不锈钢框架, 田字形透光板; 混合光源照明; 框架材料可选, 安全窗可选。
- **轿壁:** 发纹不锈钢, 材料可选。
- **观光壁:** 平面透明玻璃, 装饰立柱。
- **扶手:** 4900型, 圆形镜面不锈钢扶手 (三侧)。
- **地面:** 4901型, PVC地面装饰 (MA-0201), 大理石地面可选。
- **适用梯型:** XO-G、GeN2-G、OH-G、HY21G(A)。
- **其它:** 外挂灯带可选。

- **Up and down encloser:** 4420D type, diamond-type R3005 (rhododendron red) baking finish steel plate encloser, the color of baking finish is optional.
- **Ceiling:** 4371 type, mirror face stainless steel frame, field-word-type light-directing panel, mixed light source illumination, the frame material is optional, the security window is optional.
- **Wall of carriage compartment:** hair line stainless steel, the material is optional.
- **Sightseeing wall:** plane transparent glass, decorative vertical shaft.
- **Arm rest:** 4900 type, round stainless steel arm rest (three sides).
- **Ground:** 4901 type, PVC ground decoration (MA-0201), marble ground is optional.
- **Applicable elevator models:** XO-G、GeN2-G、OH-G、HY21G(A)
- **Others:** External hanged lamp belt is optional.

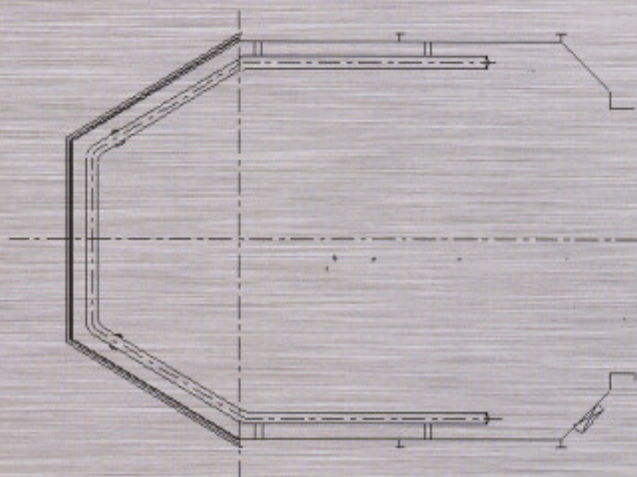


G012剖面图

G013



- **上下外罩:** 4420C型, 菱形G5005 (浅草青) 烤漆钢板外罩, 烤漆颜色可选。
- **吊顶:** 4343型, B4005 (浅水灰) 烤漆钢板框架, 镜面不锈钢顶板, 有机玻璃灯饰, 烤漆颜色可选; 安全窗可选。
- **轿壁:** 发纹不锈钢, 材料可选。
- **观光壁:** 平面透明玻璃。
- **扶手:** 4900型, 圆形镜面不锈钢扶手 (三侧)。
- **地面:** 4901型, PVC地面装饰 (MA-0201), 大理石地面可选。
- **适用梯型:** XO-G、GeN2-G、HY21G(A)。
- **其它:** 选择装饰立柱时, 外挂灯带可选。

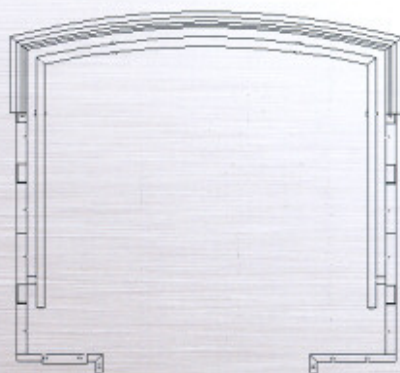


G013剖面图

- **Up and down encloser:** 4420C type, diamond-type G5005 (light grass green) baking finish steel plate encloser, the color of baking finish is optional.
- **Ceiling:** 4343 type, B4005 (light water grey) baking steel plate frame, mirror face stainless steel ceiling panel, organic glass lamp decoration, the color of baking finish is optional, the security window is optional.
- **Wall of carriage compartment:** hair line stainless steel, the material is optional.
- **Sightseeing wall:** plane transparent glass.
- **Arm rest:** 4900 type, round mirror face stainless steel arm rest (three sides).
- **Ground:** 4901 type, PVC ground decoration (MA-0201), marble ground is optional.
- **Applicable elevator models:** XO-G、OH-G、HY21G(A)。
- **Others:** the external hanged lamp belt is optional when choosing decorative vertical shaft.



G016



G016剖面图

- **上下外罩:** 4430B型, M6001 (皇冠金) 菱形烤漆钢板外罩, 烤漆颜色可选。
- **吊顶:** 4370型, B4005 (浅水灰) 烤漆钢板框架; 筒灯照明, 烤漆颜色可选。
- **轿壁:** 钛金镜面不锈钢, 材料可选。
- **观光壁:** 平面透明玻璃。
- **扶手:** 4900型, 圆形镜面不锈钢扶手 (三侧)。
- **地面:** 4901型, PVC地面装饰 (MA-0201), 大理石地面可选。
- **适用梯型:** XO-G、GeN2-G、OH-G、HY21G(A)。
- **其它:** 选择装饰立柱时, 外挂灯带可选。

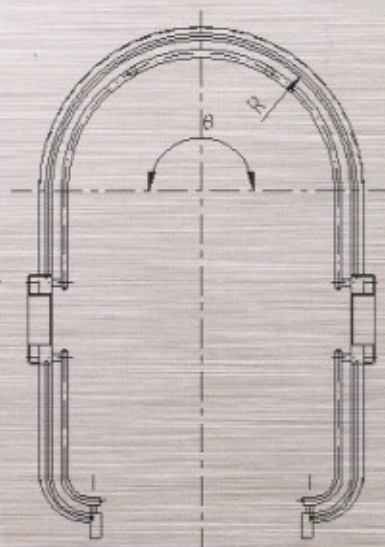
- **Up and down encloser:** 4430B type, M6001 (crown golden) diamond baking finish steel plate encloser, the color of baking finish is optional.
- **Ceiling:** 4370 type, B4005 (light water grey) baking steel plate frame, canister lamp illumination, the color of baking finish is optional.
- **Wall of carriage compartment:** titanium-metal mirror face stainless steel, the material is optional.
- **Sightseeing wall:** plane transparent glass.
- **Arm rest:** 4900 type, round mirror face stainless steel arm rest (three sides).
- **Ground:** 4901 type, PVC ground decoration (MA-0201), marble ground is optional.
- **Applicable elevator models:** XO-G、GeN2-G、OH-G、HY21G(A).
- **Others:** the external hanged lamp-belt is optional when choosing decorative vertical shaft.

- **上下外罩:** 4410L型, M6005 (极光银) 烤漆钢板外罩, 烤漆颜色可选。
- **吊顶:** 4337型, B4005 (浅水灰) 烤漆钢板框架; 混合光源照明, 烤漆颜色可选。
- **轿壁:** 镜面不锈钢框架, 透明玻璃; COP侧置; 前壁可选不锈钢或钢板, COP前置; 轿壁材料可选。
- **观光壁:** 分体透明弧形玻璃, 无装饰立柱, 整体弧形玻璃可选。
- **扶手:** 4900B型, 双管镜面不锈钢扶手。
- **地面:** 4901型, PVC地面装饰 (MA-0201), 大理石地面可选。(注: 附图为4901T, 大理石地面。)
- **适用梯型:** XO-G、GeN2-G、OH-G、HY21G(A)。

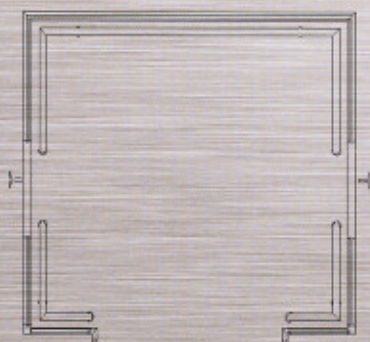
- **Up and down encloser:** 4410L type, M6005 (aurora silver) baking finish steel plate encloser, the color of baking finish is optional.
- **Ceiling:** 4337 type, B4005 (light water grey) baking finish steel plate frame, mixed light source illumination, the color of baking finish is optional.
- **Wall of carriage compartment:** mirror face stainless steel frame, transparent glass, COP side disposed; the front wall is made of stainless steel or steel plate, COP front disposed, its material is optional.
- **Sightseeing wall:** split transparent arc glass, no decorative vertical shaft, the integrated arched glass is optional.
- **Arm rest:** 4900B type, double-tube mirror face stainless steel arm rest (three sides).
- **Ground:** 4901 type, PVC ground decoration (MA-0201), marble ground is optional. (note: The attached drawing is 4901T type, marble ground.)
- **Applicable elevator models:** XO-G、GeN2-G、OH-G、HY21G(A).



G019



G019剖面图



G020剖面图

G020



- **上下外罩:** 4430E型, 钛金镜面不锈钢外装饰; 有机玻璃装饰物点缀, 材料可选。
- **吊顶:** 4350A型, 透明玻璃和吊顶4350的组合设计。
- **轿壁:** 镜面不锈钢框架, 平面透明玻璃, COP侧置材料可选; 前壁可选不锈钢或钢板, COP前置。
- **观光壁:** 平面透明玻璃, 无装饰立柱。
- **扶手:** 4900型, 圆形镜面不锈钢扶手。
- **地面:** 4901型, PVC地面装饰 (MA-0201), 大理石地面可选。(注: 附图为4901AC, 大理石地面)
- **适用梯型:** XO-G、GeN2-G、OH-G、HY21G(A)。

- **Up and down encloser:** 4430E type, titanium metal mirror face stainless steel out decoration, sparkled with organic glass decoration, the material is optional.
- **Ceiling:** 4350A type, combination design of transparent glass and 4350 ceiling
- **Wall of carriage compartment:** mirror face stainless steel frame, plane transparent glass, COP side disposed; its material is optional; the front wall is made of stainless mirror face steel or steel plate, COP front disposed.
- **Sightseeing wall:** plane transparent glass, no decorative vertical shaft.
- **Arm rest:** 4900 type, round stainless steel mirror face arm rest .
- **Ground:** 4901 type, PVC ground decoration (MA-0201), marble ground is optional.(note:the attached drawing is 4901AC.type, marble ground.)
- **Applicable elevator models:** XO-G、GeN2-G、OH-G、HY21G(A).



G020A

注：该型号剖面图请与工厂确认

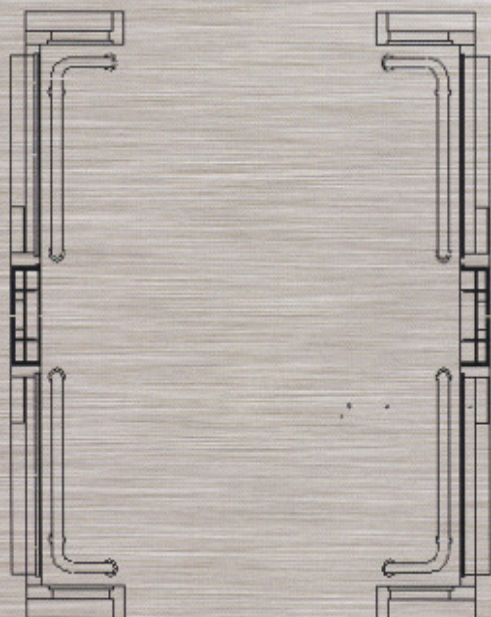
- **上下外罩：**镜面不锈钢外罩，材料可选。
- **吊顶：**4350A型，采用透明玻璃和吊顶4350组合。
- **轿壁：**平面透明玻璃、镜面不锈钢框架；镜面不锈钢内装饰，材料可选。
- **观光壁：**平面透明玻璃。
- **扶手：**4910B型，栅栏镜面不锈钢扶手。
- **地面：**4901AD型，石材地面。
- **适用梯型：**XO-G、GeN2-G、OH-G、HY21G(A)。
- **Up and down encloser:** mirror face stainless steel encloser, the material is optional.
- **Ceiling:** 4350A type, adopt the combination of transparent glass and 4350 ceiling.
- **Wall of carriage compartment:** plane transparent glass, mirror face stainless steel frame; mirror face stainless steel inner decoration, the material is optional.
- **Sightseeing wall:** plane transparent glass.
- **Arm rest:** 4910B type, plate-folding mirror face stainless mirror face steel arm rest.
- **Ground:** 4901 AD type, stone ground.
- **Applicable elevator models:**XO-G、GeN2-G、OH-G、HY21G(A).



G021

- **上下外罩:** 4430D型, M6004 (珠光银) 烤漆钢板外装饰, 烤漆颜色可选。
- **吊顶:** 4350型, 镜面不锈钢框架, 内置式灯光设计; 中部顶板穹顶设计, 框架材料可选。
- **轿壁:** 镜面不锈钢框架, 透明玻璃; 镜面不锈钢装饰盖板; 材料可选。
- **观光壁:** 平面透明玻璃。
- **扶手:** 4910B型, 栅栏镜面不锈钢扶手。
- **地面:** 4901型, PVC地面装饰 (MA-0201), 大理石地面可选。
- **适用梯型:** XO-G、GeN2-G、OH-G、HY21G(A)。

- **Up and down encloser:** 4430D type, M6004 (jewelry silver) baking finish steel plate out decoration, the color of baking finish is optional.
- **Ceiling:** 4350 type, mirror surface stainless steel frame, embedded light design, the middle roof is vault designed, the material of frame is optional.
- **Wall of carriage compartment:** mirror face stainless steel frame, transparent glass; mirror face stainless steel decoration cover plate, the material is optional.
- **Sightseeing wall:** plane transparent glass.
- **Arm rest:** 4910B type, plate-folding stainless mirror face steel arm rest.
- **Ground:** 4901 type, PVC ground decoration (MA-0201), marble ground is optional.
- **Applicable elevator models:** XO-G、GeN2-G、OH-G、HY21G(A).



G021剖面图



G022

注：该型号剖面图请与工厂确认

- **上下外罩：**4410M型，环形亚克力上罩；凸筋烤漆圆柱体下罩，烤漆颜色可选。
- **吊顶：**4338型，镜面不锈钢框架，穹顶玻璃；框架材料可选。
- **轿壁：**镜面不锈钢框架，透明玻璃，COP侧置；前壁可选不锈钢或钢板，COP前置。
- **观光壁：**分体透明弧形玻璃，无装饰立柱，整体玻璃可选。
- **扶手：**4910C型，双管镜面门字型扶手。
- **地面：**4901型，PVC地面装饰（MA-0201），大理石地面可选。
- **适用梯型：**XO-G、GeN2-G、OH-G、HY21G(A)。

- **Up and down encloser:** 4410M type, ring PMMA up encloser; convex-rib baking finish cylinder down encloser, the color of baking finish is optional.
- **Ceiling:** 4338 type, mirror surface stainless steel frame, vault glass; the material of frame is optional.
- **Wall of carriage compartment:** mirror face stainless steel frame, transparent glass, COP side disposed; the front wall is made of stainless steel or steel plate, COP front disposed.
- **Sightseeing wall:** split transparent arc glass, no decorative vertical shaft, the integrated glass is optional.
- **Arm rest:** 4910C type, double-tube mirror face gate-shape arm rest.
- **Ground:** 4901 type, PVC ground decoration (MA-0201), marble ground is optional.
- **Applicable elevator models:** XO-G、GeN2-G、OH-G、HY21G(A).