

**OTIS**

Home Elevator  
**Noriai-go™20**





## “Barrier-free” to “Floor-free”



### **Sense of floor free**

Home elevator has been working in active as transfer means for the aged and the disabled. Recently, it started that home elevator is used for all families to live with sense of one story house.

Home elevator. It is not only making easy to transfer but also change all families life comfortable.



## << Contents >>

**Panasonic**  
ideas for life

Page 3 : Noriai-go™ 20 provides many solutions for your life

Page 5 : Safety : Preparation for your relief

Page 6 : Comfort : Consideration for your convenience

Page 8 : Interior : Easy coordination for your interior

Page 9 : Specifications and features

Page 10: Hoistway layout

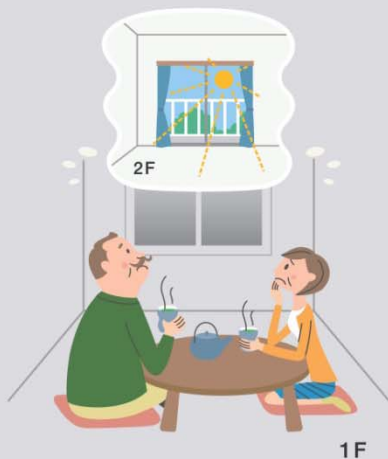
Market share  
in Japan  
(As 2010)  
**No.1**



# Noriai-go™ 20 provides many solutions for your life



## Wife and husband at home



Well lighted and airy upstairs living room



## Daily housework at home



Unnecessary for carrying up heavy vacuum cleaner



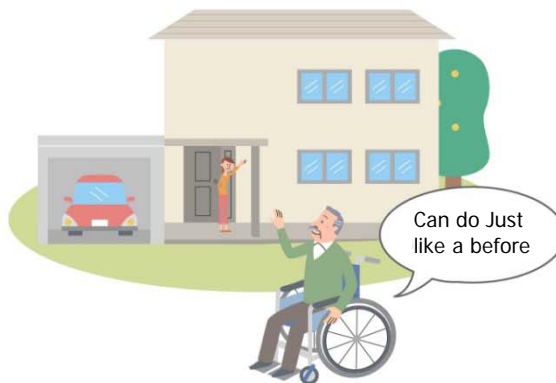
## Two families at one house



Easy to gather all family in upstairs common living room



## Wheelchair user at home



Easy to go out without anyone's assistance

# Safety

## • Preparation for your relief

### < Standard >

#### ◆Reliable operating system

The roped traction system widely used on conventional elevators in most buildings is applied to New Noriai-go™ 20.

Advantages over hydraulic elevators include:

- Smoother acceleration and deceleration by inverter control
- No odor, no oil leak - environmentally-friendly
- Car waits at the floor which it has last served unlike hydraulic equipment which automatically returns to the designated floor.

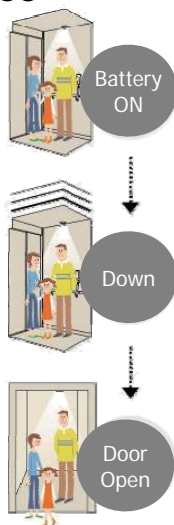
#### ◆Automatic home landing

When the elevator is not in use for a fixed period time you can make the elevator to move to and wait at home floor which previously you set up.

#### ◆Automatic rescue device

When blacking out, immediately standby power is on and car lighting is made readily available to bring the elevator safely to the nearest lower landing or the bottom landing.

When the elevator arrives at the nearest lower landing or the bottom landing, the doors will automatically open. When the power restores, you can use elevator as usual.



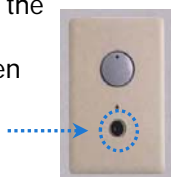
#### ◆Call cutout

Call cutout can be set not to stop the floor where you don't want to stop at.

#### ◆Parking key switch

Parking key switch at entrance renders the elevator inoperative.

This device is safety function for children not to play with the home elevator.



### < Option >

#### ◆Earthquake operation

An earthquake operation device is available as an optional feature. This device has a sensor for tremors. When the sensor detects a tremor with a magnitude beyond the predetermined level, the device will automatically stop elevator operation or bring the elevator to the nearest landing if the elevator is running.



#### ! When earthquake occurs !

Do not use elevator, even after earthquake ceases. We recommend you to have a professional check.

#### ◆Contact device with outside

When you are entrapped in a car, you can call to Otis emergency call center with the phone which is equipped in a car.

(Please ask to local Otis office for detail)



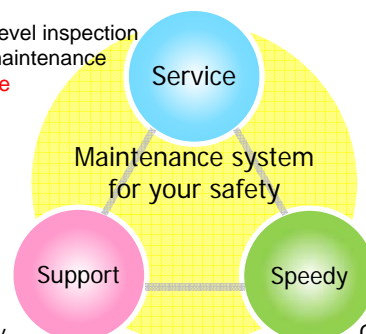
One push call for emergency

#### ◆Maintenance service

Otis offer "Safety" to you with "Service" "Support" and "Speedy".

There is local government regulation for maintenance. Therefore for the further maintenance service, please contact with your local Otis office.

High level inspection  
and maintenance  
service



Parts supply  
system for  
continuous support

Correspond to  
emergency  
situation speedy

# Comfort

## • Consideration for your convenience



**20 m/min.**  
COMFORTABLE CAR SPEED

### < Standard >

#### ◆Door open hold extension

Door opening time can be extended up to 3 minutes. This function make the aged and wheelchair user to use in relief.

#### ◆Optimum door time

Four-panel center opening doors are adopted to make door time (door opening and closing time) significantly shorter than two-panel two-speed sliding doors. Irritation with slowly moving doors will be eliminated.



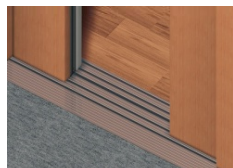
#### ◆Light beam door protection system

Light beam door sensor which can detect hazard at door opening area.



#### ◆10 mm running clearance

10 mm running clearance, which is the industry's smallest, between sills of entrance and elevator car avoid the aged and wheelchair user to stumble on.



#### ◆Leveling adjustment

Adjust the level differences in automatically

#### ◆Handrails : Horizontal type

Handrail is specially designed for the convenience and safety for the aged and wheelchair user. A horizontal handrail is fitted on the side car wall panel as a standard feature.



Height : 850 mm

#### ◆User friendly Car Operating Panel

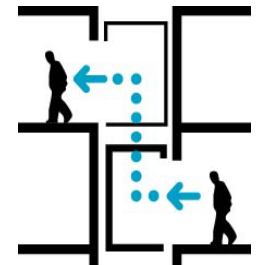
The car position is digitally indicated vividly in orange. This has large-sized buttons to allow the user to use easily.



### < Option >

#### ◆Front and rear openings

Front and rear openings can be provided as an optional feature to allow users to board the elevator car from the front entrance at a landing floor and to leave the elevator car from the rear doors at another landing floor. This arrangement provides opportunities for flexible house floor plans.



※Minimum distance between floors is 18cm

#### ◆Ventilation fan

Ventilation fan keep clean the car inside air and you can use elevator with pleasant anytime.

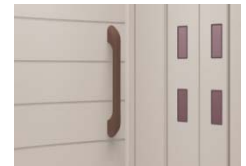
#### ◆Rear car wall panel with mirror or window

A mirror and window are available on back panel. Mirror helps to dress yourself before going out and provide a roomy space. Window can provide a nice view.

It is available to choose window type from 3 different size.



#### ◆Handrail : Vertical type



Height : center to floor 1007 mm

#### ◆Additional parking key switch

Parking key switch at entrance renders the elevator inoperative.

You can add key switch for your convenience to enter from more than 2 entrances. For example, B1F: garage 1F: entrance.



# Comfort

## • Consideration for your convenience

### ◆ Car inside

Unique barrel shape provides a roomy impression

#### Wheel Chair

W:700mm,L:1060mm  
is max. size for this car



#### Image from top



#### Light beam



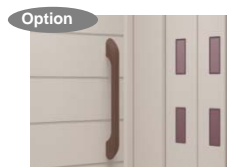
#### Mirror and window on rear panel



#### Car Operating Panel



#### Hand Rail



#### One push emergency call



### ◆ Entrance



#### Easy-to-go hall button





# Interior

• Easy coordination for your interior



**20 m/min.**  
COMFORTABLE CAR SPEED

## Entrance color



Excel Dark (UZ)



Excel Brown (CZ)



Excel Medium (MZ)



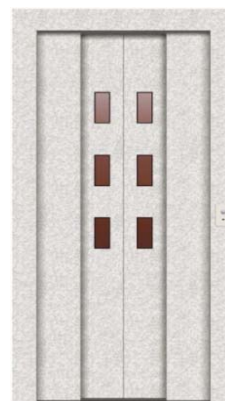
Excel Natural (SZ)



Excel Light (NZ)



Fibro White (PF-FH)



Sky Gray (PF-24)

## Cab color



Ceiling & Panel : Oyster  
Car Door : Excel Dark (UZ)  
Floor : Excel Dark (UZ)



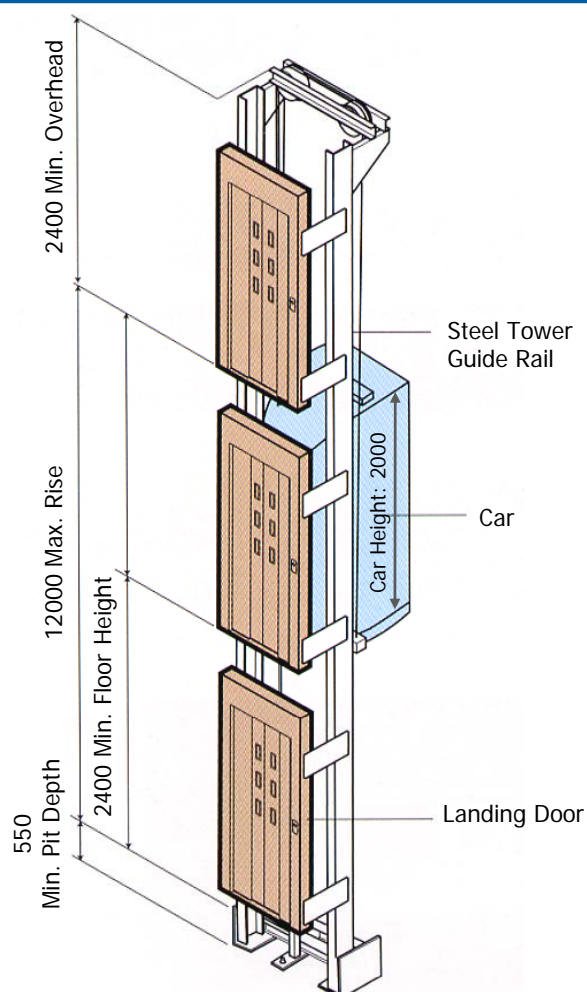
Ceiling & Panel : Oyster  
Car Door : Excel Light (NZ)  
Floor : Excel Light (NZ)



Ceiling & Panel : Oyster  
Car Door : Oyster (PF-38)  
Floor : Dark Granite (FL-D)

\*Due to the nature of the printing process, colors may vary from the original. Actual material and/or color samples will be used for final selection.

## Installation sketch



## Installation sketch

### Usage

Private home use (50 start per day)

### Drive machine

Drum machine installed inside hoistway

### Load capacity

200 kg

### Passenger capacity

3 people

### Control system

Simplex automatic operation

### Maximum number of stops

4 stops

### Maximum rise (or travel)

12 meters

### Car speed

20 m/min. (or 0.33 m/sec.)

### Power supply

Single phase, 200 V for elevator operation and 100 V for lights

### Motor

2.8 kW

### Entrance

Front only (standard) or front and rear (option)

### Door

Power operated four-panel center opening doors with light beam door protection system

### Car interior dimensions

1000 mm wide x 1200 mm deep x 2000 mm high

### Clear opening

800 mm wide x 1900 mm high

## Component descriptions

## Features

S:standard, O:option

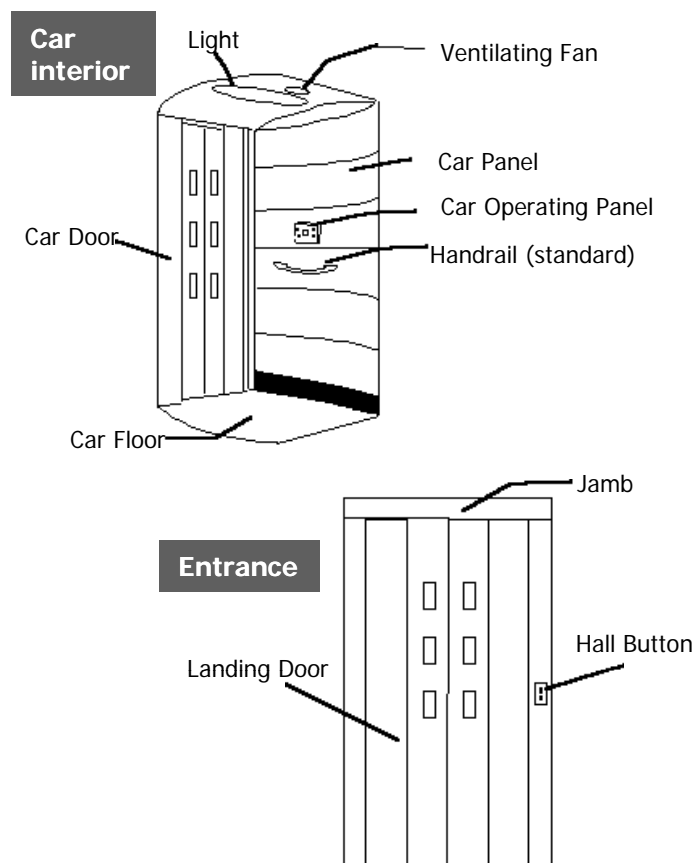
Automatic home landing . . . . .	S
Automatic rescue device . . . . .	S
Leveling adjustment . . . . .	S
Door open hold extension . . . . .	S
Call cutout . . . . .	S
Light beam door protection system . . . . .	S
Handrail - horizontal . . . . .	S
Handrail - vertical . . . . .	O
Front and rear openings . . . . .	O
Earthquake operation . . . . .	O
Ventilating fan . . . . .	O
Additional parking key switch . . . . .	O
Rear car wall panel with mirror . . . . .	O
Rear car wall panel with window . . . . .	O
Wainscot for wheelchair . . . . .	O
Reinforcing materials for wooden house . . . . .	O

## Work by others

(contract exclusions)

The provision of:

- ◆ A clean, dry hoistway, constructed to Otis' dimensions and requirements, complying with all applicable local and government regulations
- ◆ All decorative finishes on the hoistway

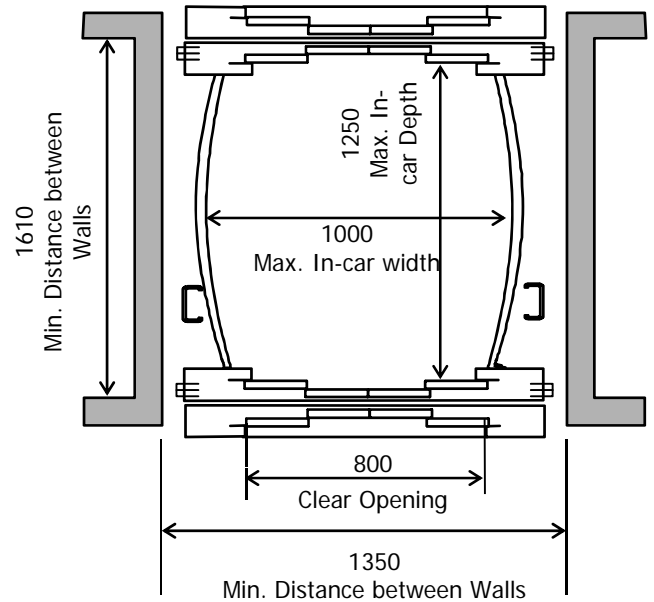
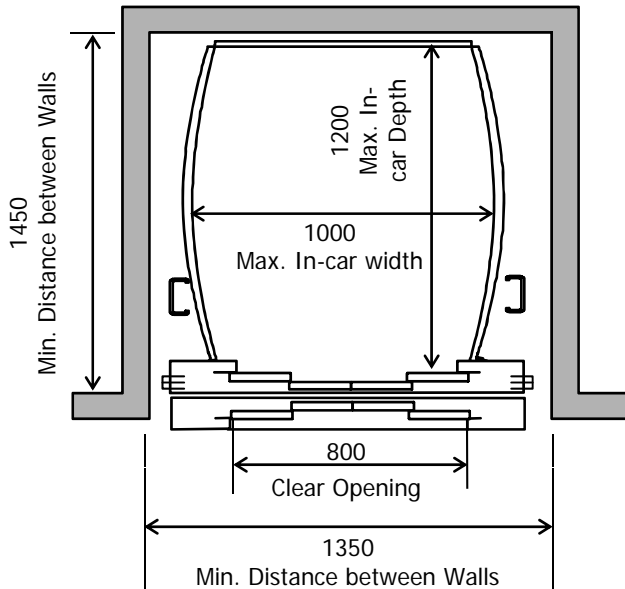


## Layout

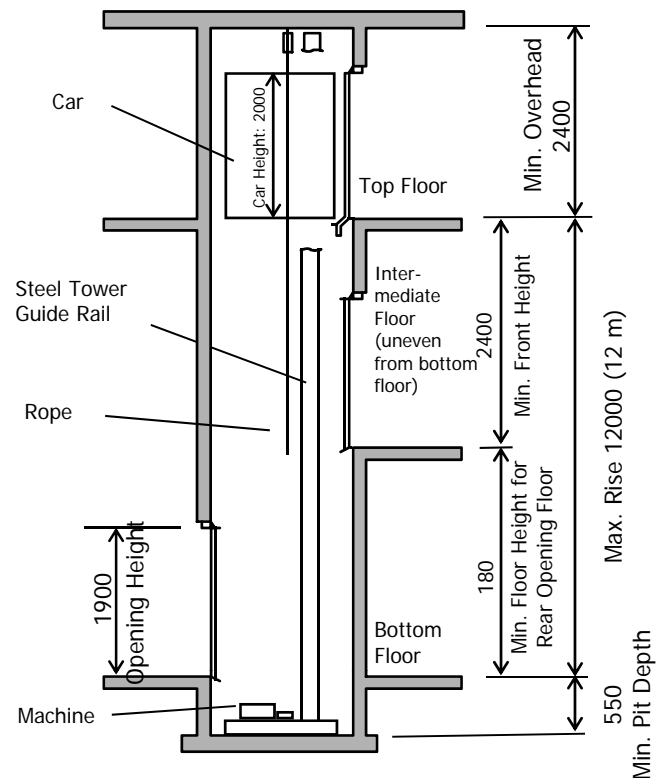
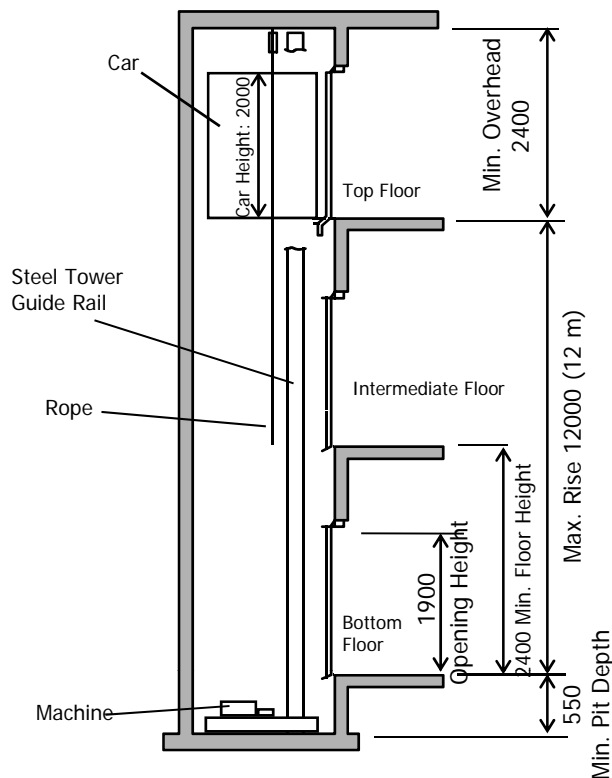
### Front Opening Only

### Front and Rear Openings

## Hoistway Plan



## Elevation



For further information, please contact with local Otis office

# OTIS

For your comfortable life